

HIFLY

TIRES

Truck and Bus Tire Catalog

HIFLY

TIRES

Shandong Changfeng Tyres Co., Ltd.

Dawang Economic Development Zone, Dongying, Shandong, 257335, China

Tel: +86 546 6893270 Fax: +86 546 6893669

Website: <http://www.hengfengtires.com>

E-mail: sales@hengfengtires.com





Shandong Changfeng Tyres Co., Ltd.

Company Profile:

HIFLY Tires, enjoying high popularity in both domestic and international markets, is one of the major brands developed by Shandong Changfeng Tyres Co., Ltd.

Shandong Changfeng Tyres Co., Ltd., one of the major tire manufacturers in China, was established in 1995 and covers an area of 2 million square meters, with total assets of over 5 billion RMB and more than 10,000 employees. The company owns 6 plants in Dongying and Linyi city, Shandong province, China. Three plants are for TBR products with annual production capacity of 6 million tires, another three plants are for PCR products with annual production capacity of 30 million tires.

Changfeng specializes in manufacturing radial tires which are widely used in passenger car, SUV, light truck, truck and bus etc., and in all seasons with excellent performance, which are well-reputed all over the world.

Changfeng takes pride in its experienced R&D team and advanced testing facilities, which assure the excellent and stable quality of its products. Many of Changfeng's manufacturing equipments are imported from Europe, United States and Japan.

Changfeng has built a strong quality assurance system and its products are accredited with certificates of ISO9001, TS16949/IATF16949, DOT, ECE, GCC, INMETRO, CCC, BIS, SNI, SONCAP, etc.



We export to more than 120 countries in the world

Version 2017

HIFLY
RADIAL
PRTTERN
RANGE

POSITION

ROAD

LONG & REGIONAL HAUL

MIXED SERVICE

OFF ROAD



ALL POSITION



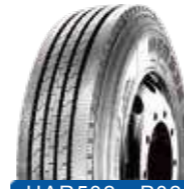
HH105 P02



HH117 P02



HAR515 P02



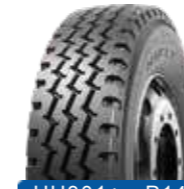
HAR532 P02



HAR518 P03



HH301 P14



HH301+ P14



HH307 P14



HAM517 P14



HH599+ P03



HAL535 P03



HAL536 P03



HAU512 P04

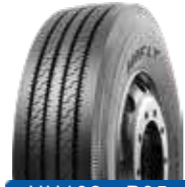


HAM537 P15

STEER/TRAILER



HH101 P05



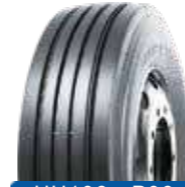
HH102 P05



HH104 P05



HH104+ P05



HH106 P06



HH111 P06



HH121 P06



HH123 P06



HH124 P07



HSL129 P07

DRIVE



HH122 P08



HH368 P08



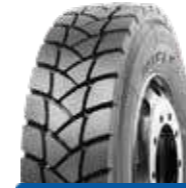
HH309 P08



HH310 P08



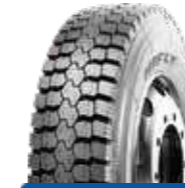
HH312 P09



HH302 P16



HH306 P16



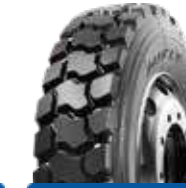
HH311 P16



HH313 P16



HH168 P20



HH317 P20



HH318 P21



HH308A P09



HH505 P09



HDL230 P09



HDR233 P10



HDR255 P10



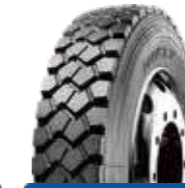
HH322 P17



HH329 P17



HH303 P17



HDM216 P17



HH320 P21



HH321 P22

TRAILER



HH107 P11



HH118 P11



HTL311 P11



HTL323 P11



HTL325 P12



HTM313 P18



HH303 P17



HH168 P20



HH317 P20



HH318 P21



HTL331 P12



HTL357 P12



HH320 P21



HH321 P22



ALL POSITION



HH105

Features

- ▶ Three groove design with lugs
- ▶ Special tread compound
- ▶ Shoulder design with lugs and sipes

Benefits

- ▶ Provide outstanding wet performance
- ▶ Provide outstanding resistance to abrasion
- ▶ Provide excellent heat dissipation



HH117

Features

- ▶ Three zigzag grooves design with lugs
- ▶ Special tread compound
- ▶ Shoulder design with lugs and sipes

Benefits

- ▶ Provide excellent wet performance
- ▶ Provide outstanding resistance to abrasion
- ▶ Provide outstanding heat dissipation



HAR515

Features

- ▶ Special tread compound
- ▶ Three zigzag grooves
- ▶ Special groove design
- ▶ Optimized pattern design

Benefits

- ▶ Provide outstanding resistance to abrasion
- ▶ Provide good applicability for all position
- ▶ Deliver stone-ejecting property
- ▶ Provide outstanding resistance to irregular abrasion



HAR532

Features

- ▶ Special tread compound
- ▶ Rib pattern with horizontal siping and grooves

Benefits

- ▶ Lower fuel consumption
- ▶ Better handling and traction



Long Haul



Regional Haul



Operation:

- Highways and long distance / Regional highways and city streets
- Well paved road conditions / Mainly used on paved roads, occasionally run on unpaved roads
- Constant and high speed with minimal braking and accelerating / Frequent braking, accelerating and turning

Size	HH105	HH117	HAR515	HAR532
9.00R20	144/142 K			
10.00R20	149/146 K			
11.00R20	152/149 K			
12.00R20	154/151 K			
11R22.5			144/142 M	144/142 M
11R22.5			148/145 L	146/143 L
12R22.5		152/149 L	152/149 L	
11R24.5				146/143 M
11R24.5				149/146 L
275/70R22.5			148/145 M	
295/75R22.5				144/141 M
295/75R22.5				146/143 L
295/80R22.5			152/149 M	
315/80R22.5			156/152 K	
285/75R24.5				144/142 M
285/75R24.5				147/144 L



ALL POSITION



HAR518

Features

- ▶ Special tread compound
- ▶ Three zigzag grooves
- ▶ Special groove design
- ▶ Optimized pattern design

Benefits

- ▶ Provide outstanding resistance to abrasion
- ▶ Provide good applicability for all position
- ▶ Deliver stone-ejecting property
- ▶ Provide outstanding resistance to irregular abrasion



HH599+

Features

- ▶ Four circumferential grooves
- ▶ Ladder arrangement design of longitudinal pattern
- ▶ Special tread compound
- ▶ Reinforced carcass and bead design

Benefits

- ▶ Ensure excellent water evacuation, even pressure distribution and heat dissipation
- ▶ Reduce irregular wear greatly
- ▶ Provide outstanding resistance to abrasion
- ▶ Ensure excellent handling and safe performance and provide outstanding loading capacity



HAL535

Features

- ▶ Special tread compound
- ▶ Rib pattern with horizontal siping and grooves

Benefits

- ▶ Better mileage and wear resistance
- ▶ Improved handling and wet grip



HAL536

Features

- ▶ Special tread compound
- ▶ Rib pattern with horizontal siping and grooves

Benefits

- ▶ Better mileage and wear resistance
- ▶ Improved handling and wet grip

Size	HAR518	HH599+	HAL535	HAL536
8.25R15			129/127 L	
8.25R15TR			129/127 L	
10.00R15TR			137/135 L	
11.00R20		152/149 J		
8R19.5				124/122 M
9R22.5				136/134 M
10R22.5				141/139 M
215/75R17.5			135/133 J	
225/75R17.5	129/127 M			
235/75R17.5			143/141 J	
245/70R17.5	136/134 M			
245/70R17.5	143/141 J(146/146 F)			
225/70R19.5			128/126 M	
245/70R19.5			133/131 M	
245/70R19.5	136/134 M			
245/70R19.5	141/140 J			
265/70R19.5	140/138 M			
265/70R19.5	143/141 J			
285/70R19.5	146/144 L(144/142 M)			
285/70R19.5	150/148 J			
255/70R22.5				
275/70R22.5			140/137 L	
315/80R22.5			152/148 J	157/154 K



ALL POSITION



HAU512

Features

- ▶ Reinforced sidewalls
- ▶ Special compound for urban application
- ▶ New construction

Benefits

- ▶ Better protection against curbing and abrasions
- ▶ Improved mileage
- ▶ Improved retreadability

Size	HAU512
275/70R22.5	148/145 J



STEER/TRAILER



*HH101

Features

- ▶ Four wide circumferential grooves
- ▶ Special groove design
- ▶ Siped rib and shoulder design

Benefits

- ▶ Ensure excellent water evacuation, even pressure distribution and heat dissipation
- ▶ Deliver stone-ejecting property
- ▶ Provide excellent heat dissipation



*HH102

Features

- ▶ Four wide circumferential grooves
- ▶ Siped rib and shoulder design
- ▶ Reinforced carcass and wide tread
- ▶ Specially designed compound

Benefits

- ▶ Ensure excellent water evacuation, even pressure distribution and heat dissipation
- ▶ Provide excellent heat dissipation
- ▶ Ensure excellent handling and safe performance
- ▶ Deliver lower rolling resistance



*HH104

Features

- ▶ Four zigzag grooves
- ▶ Solid shoulder design
- ▶ Variable pitch design
- ▶ Specially designed compound

Benefits

- ▶ Provide excellent anti-sideslipping performance and ensure excellent water evacuation
- ▶ Provide outstanding resistance to abrasion
- ▶ Reduce rolling noise greatly
- ▶ Deliver lower rolling resistance



*HH104+

Features

- ▶ Four zigzag grooves
- ▶ Solid shoulder design
- ▶ Variable pitch design
- ▶ Specially designed compound

Benefits

- ▶ Provide excellent anti-sideslipping performance and ensure excellent water evacuation
- ▶ Provide outstanding resistance to abrasion
- ▶ Reduce rolling noise greatly
- ▶ Deliver lower rolling resistance

Size	HH101	HH102	HH104	HH104+	Remarks
9.00R20			144/142 K		The symbol of "*" represents patterns applicable for all position bus.
10.00R20			149/146 K		
11.00R20			152/149 K		
12.00R20			154/151 K		
11R22.5	148/145 M	148/145 M	148/145 M		
12R22.5	152/149 M	152/149 M			
13R22.5		156/152 L(154/151 M)			
215/75R17.5		135/133 J			
255/70R22.5		140/137 L			
295/80R22.5		152/149 M			
315/70R22.5		154/150 L(152/148 M)			
315/80R22.5		156/152 L(154/151 M)		156/152 L(154/151 M)	



STEER/TRAILER



HH106

Features

- ▶ Four wide circumferential grooves
- ▶ Siped rib and shoulder design
- ▶ Specially designed compound

Benefits

- ▶ Ensure excellent water evacuation, even pressure distribution and heat dissipation
- ▶ Provide excellent heat dissipation
- ▶ Deliver lower rolling resistance



HH111

Features

- ▶ Solid rib design combined with multiple sipes
- ▶ Four wide circumferential grooves
- ▶ Solid shoulder design

Benefits

- ▶ Provide excellent heat dissipation and improved regular wear with lower resistance
- ▶ Ensure excellent water evacuation, even pressure distribution and heat dissipation
- ▶ Provide outstanding resistance to abrasion



HH121

Features

- ▶ Four circumferential grooves
- ▶ Solid shoulder design
- ▶ Specially designed compound

Benefits

- ▶ Provide excellent anti-sideslipping performance and ensure excellent water evacuation
- ▶ Provide outstanding resistance to abrasion
- ▶ Reduce rolling noise greatly
- ▶ Deliver lower rolling resistance



HH123

Features

- ▶ Four circumferential grooves
- ▶ Solid shoulder design
- ▶ Specially designed compound

Benefits

- ▶ Provide excellent anti-sideslipping performance and ensure excellent water evacuation
- ▶ Provide outstanding resistance to abrasion
- ▶ Reduce rolling noise greatly
- ▶ Deliver lower rolling resistance

Size	HH106	HH111	HH121	HH123
8.25R16LT			128/124 M	
11.00R20			152/149 K	152/149 K
9.5R17.5			143/141 J	
11R22.5		146/143 L		
11R24.5		146/143 L		
215/75R17.5		135/133 L		
235/75R17.5		143/141 L		
225/70R19.5		128/126 L		
245/70R19.5		135/133 L		
255/70R22.5		140/137 L		
295/75R22.5		144/141 M		
295/75R22.5		146/143 L		
295/80R22.5	152/149 M		152/149 M	
315/70R22.5			154/150 L(152/148 M)	
315/80R22.5			156/152 L(154/151 M)	
285/75R24.5		144/141 M		
285/75R24.5		147/144 L		



STEER/TRAILER



HH124

Features

- ▶ Solid rib design combined with multiple sipes
- ▶ Four wide circumferential grooves
- ▶ Solid shoulder design

Benefits

- ▶ Provide excellent heat dissipation and improved regular wear with lower resistance
- ▶ Ensure excellent water evacuation, even pressure distribution and heat dissipation
- ▶ Provide outstanding resistance to abrasion



HSL129

Features

- ▶ Special tread compound
- ▶ Shoulder protection design

Benefits

- ▶ Lower fuel consumption
- ▶ Reduce uneven wear on shoulder

Size	HH124	HSL129
11R22.5		144/142 M
11R24.5		146/143 M
295/75R22.5		144/141 M
315/80R22.5	156/152 L(154/151 M)	
285/75R24.5		144/142 M



DRIVE



HH122

Features

- ▶ Three circumferential grooves
- ▶ Block pattern design
- ▶ Special tread compound
- ▶ Solid shoulder design

Benefits

- ▶ Ensure outstanding water evacuation, even pressure distribution and heat dissipation
- ▶ Provide excellent driving and braking force
- ▶ Provide outstanding resistance to puncture and tearing
- ▶ Provide outstanding resistance to abrasion



HH309

Features

- ▶ Asymmetric lug design
- ▶ Block pattern design
- ▶ Four circumferential grooves
- ▶ Reinforced carcass and bead design

Benefits

- ▶ Combine regular wear with excellent traction
- ▶ Provide excellent driving and braking force
- ▶ Ensure excellent water evacuation, even pressure distribution and heat dissipation
- ▶ Ensure excellent handling and safe performance and provide outstanding loading capacity

Size	HH122	HH368	HH309	HH310
10.00R20		149/146 K		
12.00R24	160/157 K			160/157 K
11R22.5			148/145 M	
12R22.5			152/149 L	
13R22.5			156/152 L(154/151 M)	
215/75R17.5			135/133 J	
235/75R17.5			143/141 J	
295/80R22.5		152/149 M	152/149 M	
315/70R22.5			154/150 L(152/148 M)	
315/80R22.5	156/152 L(154/151 M)		156/152 L(154/151 M)	



HH368

Features

- ▶ Special tread compound
- ▶ Four circumferential grooves
- ▶ Deeper tread depth design
- ▶ Block pattern design

Benefits

- ▶ Provide outstanding resistance to puncture and tearing
- ▶ Ensure excellent water evacuation, even pressure distribution and heat dissipation
- ▶ Improved mileage performance
- ▶ Provide excellent driving and braking force



HH310

Features

- ▶ Four circumferential grooves
- ▶ Block pattern design
- ▶ Special tread compound
- ▶ Solid shoulder design

Benefits

- ▶ Ensure excellent water evacuation, even pressure distribution and heat dissipation
- ▶ Provide excellent driving and braking force
- ▶ Provide outstanding resistance to puncture and tearing
- ▶ Provide outstanding resistance to abrasion



DRIVE



HH312

Features

- ▶ Block pattern design
- ▶ Solid shoulder design
- ▶ Four wide circumferential grooves

Benefits

- ▶ Provide excellent driving and braking force
- ▶ Provide outstanding resistance to abrasion
- ▶ Ensure excellent water evacuation, even pressure distribution and heat dissipation



HH308A

Features

- ▶ Block pattern design
- ▶ Extra wide footprint
- ▶ Deeper tread depth design

Benefits

- ▶ Provide excellent driving and braking force
- ▶ Enhanced stability and resistance to abrasion
- ▶ Improved mileage performance



HH505

Features

- ▶ Block pattern design
- ▶ Extra wide footprint
- ▶ Deeper tread depth design

Benefits

- ▶ Provide excellent driving and braking force
- ▶ Enhanced stability and resistance to abrasion
- ▶ Improved mileage performance



HDL230

Features

- ▶ Solid and wide shoulder with deep tread
- ▶ Stone ejectors

Benefits

- ▶ Better mileage
- ▶ Prevent stone drilling



HDR233

Features

- ▶ Deep groove with stone ejectors
- ▶ Open shoulder block pattern

Benefits

- ▶ Prevent stone drilling
- ▶ Improved traction



HDR255

Features

- ▶ Special tread compound
- ▶ Special drive tread design and optimised footprint
- ▶ New construction

Benefits

- ▶ Improved mileage
- ▶ Better traction and handling
- ▶ Even wear

Size	HH312	HH308A	HH505	HDL230
10.00R20		149/146 K	149/146 K	
11R22.5				144/142 M
11R22.5	148/145 M	148/145 M		146/143 L
12R22.5		152/149 M		
11R24.5	146/143 M			146/143 L
11R24.5	149/146 L			149/146 L
295/75R22.5	144/141 M			144/141 M
295/75R22.5	146/143 L			146/143 L
285/75R24.5	144/141 M			144/142 L
285/75R24.5	147/144 L			147/144 L
315/70R22.5		154/150 L(152/148 M)		
315/80R22.5		156/152 L(154/151 M)		

Size	HDR233	HDR255
10R22.5	141/139 L	
11R22.5	146/143 L	
11R24.5	149/146 L	
265/70R19.5		143/141 J



TRAILER



HH107

Features

- ▶ Four zigzag grooves
- ▶ Extra wide footprint with square shoulder
- ▶ Special tread compound

Benefits

- ▶ Provide excellent anti-sidesliping performance and ensure excellent water evacuation
- ▶ Enhanced stability and resistance to abrasion
- ▶ Provide outstanding resistance to abrasion



HH118

Features

- ▶ Four circumferencial grooves
- ▶ Special groove design
- ▶ Curved lug design

Benefits

- ▶ Ensure excellent water evacuation, even pressure distribution and heat dissipation
- ▶ Deliver stone-ejecting property
- ▶ Deliver excellent driving and braking force



HTL311

Features

- ▶ Optimized pattern design
- ▶ Special groove design
- ▶ Reinforced carcass and wide tread
- ▶ Specially designed compound

Benefits

- ▶ Provide outstanding resistance to irregular abrasion
- ▶ Deliver stone-ejecting property
- ▶ Ensure excellent handling and safe performance
- ▶ Provide outstanding resistance to abrasion
- ▶ Deliver lower rolling resistance



HTL323

Features

- ▶ Special tread compound

Benefits

- ▶ Improved mileage

Size	HH107	HH118	HTL311	HTL323
11R22.5		148/145 M		
12R22.5		152/149 M		
235/75R17.5	143/141 J			
295/75R22.5		144/141 M		
295/75R22.5		146/143 L		
385/55R22.5			160 K(158 L)	
385/65R22.5	160 K		160 K(158 L)	
425/65R22.5			165 K	
445/65R22.5			169 K	
ST235/85R16				129/125 L
ST235/85R16				129/125 L
ST235/85R16				132/127 L



TRAILER



HTL325

Features

- ▶ Special tread compound

Benefits

- ▶ Better mileage



HTL331

Features

- ▶ Special tread compound
- ▶ Rib pattern with siping

Benefits

- ▶ Lower fuel consumption
- ▶ Better wet grip performance and lateral stability



HTL357

Features

- ▶ Optimization of the ratio of tread block
- ▶ Low rolling resistance tire tread compound formulation
- ▶ Multiple angle groove wall and stone kicker design
- ▶ Extra wide ground contact

Benefits

- ▶ Prevent uneven wear
- ▶ Provide better fuel efficiency
- ▶ Deliver stone ejecting property
- ▶ Provide excellent longer wear performance and high mileage

Size	HTL325	HTL331	HTL357
11R22.5		144/142 M	
11R24.5		146/143 M	
295/75R22.5		144/141 M	
285/75R24.5		144/142 M	
435/50R19.5			160 J
ST225/75R15	121/117 M		



ALL POSITION



Features

- ▶ Three zigzag grooves
- ▶ Combination of rib and lug design
- ▶ Shoulder design with lugs

Benefits

- ▶ Provide excellent anti-sidesliping performance and ensure excellent water evacuation
- ▶ Deliver outstanding traction and handling
- ▶ Provide excellent heat dissipation



Features

- ▶ Three zigzag grooves
- ▶ Combination of rib and lug design
- ▶ Shoulder design with lugs

Benefits

- ▶ Provide excellent anti-sidesliping performance and ensure excellent water evacuation
- ▶ Deliver outstanding traction and handling
- ▶ Provide excellent heat dissipation



Features

- ▶ Three zigzag grooves
- ▶ Reinforced carcass and bead design
- ▶ Special groove design
- ▶ Shoulder design with lugs

Benefits

- ▶ Provide excellent anti-sidesliping performance and ensure excellent water evacuation
- ▶ Ensure excellent handling and safe performance and provide outstanding loading capacity
- ▶ Deliver stone-ejecting property
- ▶ Provide excellent heat dissipation



Features

- ▶ Three zigzag grooves
- ▶ Combination of rib and lug design
- ▶ Shoulder design with lugs

Benefits

- ▶ Provide excellent anti-sidesliping performance and ensure excellent water evacuation
- ▶ Deliver outstanding traction and handling
- ▶ Provide excellent heat dissipation



Mixed Service



Operation:

- Frequently used on and off roads
- Heavier loads
- Construction site

Size	HH301	HH301+	HH307	HAM517
6.50R16LT	113/110 K			
7.00R16LT	118/114 M			
7.50R16LT		122/118 M		
8.25R16LT	128/124 M			
8.25R20	139/137 L			
9.00R20	144/142 K			
10.00R20	149/146 K		149/146 K	
11.00R20	152/149 K		152/149 K	
12.00R20	154/151 K		154/151 K	
12.00R24	160/157 K			160/157 K
11R22.5	148/145 M			148/145 K
12R22.5	152/149 M		152/149 L	152/149 K
13R22.5	156/152 L(154/151 M)			
11R24.5	149/146 L			
295/80R22.5				152/149 K
315/80R22.5		156/152 L(154/151 M)		156/152 K



ALL POSITION



HAM537

Features

- ▶ Zigzag pattern
- ▶ Special tread compound

Benefits

- ▶ Improved traction and handling in mixed service application
- ▶ Better resistance to chipping



DRIVE



HH302

Features

- ▶ Special tread compound
- ▶ Block pattern design
- ▶ Extra wide footprint with square shoulder
- ▶ Reinforced carcass and bead design

Benefits

- ▶ Provide outstanding resistance to puncture and tearing
- ▶ Provide excellent driving and braking force
- ▶ Enhanced stability and resistance to abrasion
- ▶ Ensure excellent handling and safe performance and provide outstanding loading capacity



HH306

Features

- ▶ Lug and block pattern design
- ▶ Special tread compound

Benefits

- ▶ Improved traction, driving and braking performance
- ▶ Provide outstanding resistance to puncture and tearing



HH311

Features

- ▶ Special tread compound
- ▶ Lug and block pattern design
- ▶ Siped pattern and shoulder design

Benefits

- ▶ Provide outstanding resistance to puncture and tearing
- ▶ Improved traction, driving and braking performance
- ▶ Provide excellent heat dissipation



HH313

Features

- ▶ Lug and block pattern design
- ▶ Special groove design
- ▶ Special tread compound
- ▶ Open shoulder design

Benefits

- ▶ Improved traction, driving and braking performance
- ▶ Deliver stone-ejecting property
- ▶ Provide outstanding resistance to puncture and tearing
- ▶ Provide excellent heat dissipation

Size	HAM537
11R22.5	146/143 K
11R24.5	149/146 K

Size	HH302	HH306	HH311	HH313
7.00R16LT		118/114 M		
7.50R16LT		122/118 M		
8.25R16LT		128/124 M		128/124 L
8.25R20		139/137 L		139/137 K
9.00R20		144/142 J	144/142 J	144/142 K
10.00R20	149/146 K	149/146 K	149/146 K	149/146 K
11.00R20	152/149 J	152/149 K	152/149 K	152/149 K
12.00R20	154/151 K	154/151 K	154/151 K	154/151 K
12R22.5	152/149 M		152/149 M	
13R22.5	156/152 L(154/151 M)			
315/80R22.5	156/152 L(154/151 M)			



Features

- ▶ Special tread compound
- ▶ Lug and special block pattern design

Benefits

- ▶ Provide outstanding resistance to puncture and tearing
- ▶ Improved traction, driving and braking performance

HH322



Features

- ▶ Special tread compound
- ▶ Lug and special block pattern design

Benefits

- ▶ Provide outstanding resistance to puncture and tearing
- ▶ Improved traction, driving and braking performance

HH329



Features

- ▶ Inter-connected block pattern
- ▶ Reinforced carcass and bead design
- ▶ Special groove design

Benefits

- ▶ Provide excellent driving force, cutting resistance and even wear
- ▶ Ensure excellent handling and safe performance and provide outstanding loading capacity
- ▶ Deliver stone-ejecting property

HH303



Features

- ▶ Deep tread block pattern
- ▶ Special groove design
- ▶ Tread compound for mixed service

Benefits

- ▶ Improved traction
- ▶ Self cleaning
- ▶ Better resistance to chipping

HDM216

Size	HH322	HH329	HH303	HDM216
7.00R16LT			118/114 K	
7.50R16LT			122/118 J	
8.25R16LT			128/124 J	
8.25R20			139/137 K	
9.00R20			144/142 J	
10.00R20		149/146 K	149/146 K	
11.00R20		152/149 K	152/149 J	
12.00R20		154/151 K	154/151 J	
12.00R24	160/157 K	160/157 K		
11R22.5				148/145 G
11R22.5				146/143 J
315/80R22.5	156/152 L(154/151 M)			



Features

- ▶ Special tread compound
- ▶ Lug and block pattern design
- ▶ Special groove design

HTM313

Benefits

- ▶ Provide outstanding resistance to puncture and tearing
- ▶ Improved traction, driving and braking performance
- ▶ Deliver stone-ejecting property

Size	HTM313
385/65R22.5	160 K(158 L)



HH168

Features

- ▶ Special tread compound
- ▶ Lug and special block pattern design

Benefits

- ▶ Provide outstanding resistance to puncture and tearing
- ▶ Improved traction, driving and braking performance



HH317

Features

- ▶ Special tread compound
- ▶ Block pattern design
- ▶ Reinforced carcass and bead design

Benefits

- ▶ Provide outstanding resistance to puncture and tearing
- ▶ Improved traction, driving and braking performance
- ▶ Ensure excellent handling and safe performance and provide outstanding loading capacity

Size	HH168	HH317
7.00R16LT	118/114 K	
7.50R16LT	122/118 K	
8.25R16LT	128/124 K	
8.25R20	139/137 C	
9.00R20	144/142 C	
10.00R20	149/146 C	149/146 K
11.00R20		152/149 K
12.00R20	154/151 C	154/151 K



Operation:

- Mostly used on rugged terrain like mining or heavy construction
- Heavier loads
- High risk of damage from road conditions



DRIVE/TRAILER



HH318

Features

- ▶ Lug and block pattern design
- ▶ Special tread compound
- ▶ Reinforced carcass and bead design

Benefits

- ▶ Improved traction, driving and braking performance
- ▶ Provide outstanding resistance to puncture and tearing
- ▶ Ensure excellent handling and safe performance and provide outstanding loading capacity



HH320

Features

- ▶ Special tread compound
- ▶ Lug and block pattern design
- ▶ Reinforced carcass and bead design

Benefits

- ▶ Provide outstanding resistance to puncture and tearing
- ▶ Improved traction, driving and braking performance
- ▶ Ensure excellent handling and safe performance and provide outstanding loading capacity

Size	HH318	HH320
8.25R20	139/137 C	
9.00R20	144/142 C	
10.00R20	149/146 C	
11.00R20	152/149 C	
12.00R20	154/151 C	
295/80R22.5	152/149 C	156/153 K



DRIVE/TRAILER



HH321

Features

- ▶ Lug and block pattern design
- ▶ Special tread compound
- ▶ Reinforced carcass and bead design

Benefits

- ▶ Improved traction, driving and braking performance
- ▶ Provide outstanding resistance to puncture and tearing
- ▶ Ensure excellent handling and safe performance and provide outstanding loading capacity

Size	HH321
11.00R20	152/149 C
12.00R20	154/151 C

PRODUCT RANGE



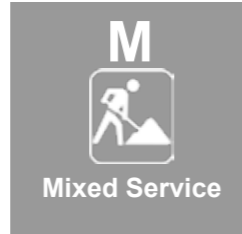
DIMENSION	HH105	HH117	HAR532	HAR515	HAR518	HH599+	HAL535	HAL536	HAU512	HH101	HH102	HH104	HH104+	HH106	HH111	HH121	HH123	HH124
8.25R15(TR) 14PR							129/127 L											
8.25R16LT 16PR																128/124 M		
9.00R20 16PR	144/142 K											144/142 K						
10.00R15TR 14PR							137/135 L											
10.00R20 18PR	149/146 K											149/146 K						
11.00R20 18PR	152/149 K					152/149 J						152/149 K				152/149 K	152/149 K	
12.00R20 18PR	154/151 K											154/151 K						
9.5R17.5 16PR																143/141 J		
8R19.5 12PR								124/122 M										
9R22.5 14PR								136/134 M										
10R22.5 14PR								141/139 M										
11R22.5 14PR			144/142 M	144/142 M														
11R22.5 16PR			146/143 L	148/145 L						148/145 M	148/145 M	148/145 M				146/143 L		
12R22.5 18PR		152/149 L		152/149 L						152/149 M	152/149 M							
13R22.5 20PR												156/152L(154/151 M)						
11R24.5 14PR			146/143 M													146/143 M		
11R24.5 16PR			149/146 L															
215/75R17.5 16PR							135/133 J				135/133 J					135/133 L		
225/75R17.5 14PR					129/127 M													
235/75R17.5 16PR									143/141 J							143/141 L		
245/70R17.5 16PR							136/134 M											
245/70R17.5 18PR							146/146F(143/141 J)											
225/70R19.5 14PR								128/126 M								128/126 L		
245/70R19.5 14PR								133/131 M										
245/70R19.5 16PR							136/134 M									135/133 L		
245/70R19.5 18PR							141/140 J											
265/70R19.5 16PR							140/138 M											
265/70R19.5 18PR							143/141 J											
285/70R19.5 16PR							146/144L(144/142M)											
285/70R19.5 18PR							150/148 J											
255/70R22.5 16PR								140/137 L				140/137 L				140/137 L		
275/70R22.5 16PR				148/145 M						148/145 J								
275/70R22.5 18PR								152/148 J										
295/75R22.5 14PR			144/141 M													144/141 M		
295/75R22.5 16PR			146/143 L													146/143 L		
295/80R22.5 18PR				152/149 M								152/149 M		152/149 M		152/149 M		
315/70R22.5 20PR												154/150L(152/148M)				154/150L(152/148M)		
315/80R22.5 20PR				156/152 K				157/154 K				156/152L(154/151 M)		156/152L(154/151 M)		156/152L(154/151 M)		156/152L(154/151 M)
285/75R24.5 14PR			144/142 M													144/141 M		
285/75R24.5 16PR			147/144 L													147/144 L		

PRODUCT RANGE



DIMENSION	HSL129	HH122	HH368	HH309	HH310	HH312	HH308A	HH505	HDL230	HDR233	HDR255	HH107	HH118	HTL311	HTL323	HTL325	HTL331	HTL357
10.00R20 18PR			149/146 K					149/146 K	149/146 K									
12.00R24 20PR		160/157 K			160/157 K													
10R22.5 14PR										141/139 L								
11R22.5 14PR	144/142 M								144/142 M								144/142 M	
11R22.5 16PR				148/145 M		146/143 L	148/145 M		146/143 L	146/143 L			148/145 M					
12R22.5 18PR				152/149 L			152/149 M						152/149 M					
13R22.5 20PR				156/152L(154/151 M)														
11R24.5 14PR	146/143 M					146/143 M			146/143 L								146/143 M	
11R24.5 16PR						149/146 L			149/146 L	149/146 L								
215/75R17.5 16PR				135/133 J														
235/75R17.5 16PR				143/141 J									143/141 J					
435/50R19.5 20PR																		160 J
265/70R19.5 18PR											143/141 J							
295/75R22.5 14PR	144/141 M					144/141 M			144/141 M				144/141 M				144/141 M	
295/75R22.5 16PR						146/143 L			146/143 L				146/143 L					
295/80R22.5 18PR			152/149 M	152/149 M														
315/70R22.5 20PR				154/150L(152/148 M)				154/150L(152/148 M)										
315/80R22.5 20PR		156/152L(154/151 M)		156/152L(154/151 M)				156/152L(154/151 M)										
385/55R22.5 20PR																160 K(158 L)		
385/65R22.5 20PR												160 K			160 K(158 L)			
425/65R22.5 20PR															165 K			
445/65R22.5 20PR															169 K			
285/75R24.5 14PR	144/142 M					144/141 M			144/142 L								144/142 M	
285/75R24.5 16PR						147/144 L			147/144 L									
ST225/75R15 12PR																	121/117 M	
ST235/85R16 12PR															129/125 L			
ST235/85R16 14PR															129/125 L			
ST235/85R16 14PR															132/127 L			

PRODUCT RANGE



DIMENSION	HH301	HH301+	HH307	HAM517	HAM537	HH302	HH306	HH311	HH313	HH322	HH329	HH303	HDM216	HTM313	HH168	HH317	HH318	HH320	HH321
6.50R16LT 12PR	113/110 K																		
7.00R16LT 14PR	118/114 M						118/114 M						118/114 K		118/114 K				
7.50R16LT 14PR	122/118 M						122/118 M						122/118 J		122/118 K				
8.25R16LT 16PR	128/124 M						128/124 M		128/124 L			128/124 J			128/124 K				
8.25R20 16PR	139/137 L						139/137 L		139/137 K			139/137 K			139/137 C		139/137 C		
9.00R20 16PR	144/142 K						144/142 J	144/142 J	144/142 K			144/142 J			144/142 C		144/142 C		
10.00R20 18PR	149/146 K		149/146 K			149/146 K	149/146 K	149/146 K	149/146 K		149/146 K	149/146 K			149/146 C	149/146 K	149/146 C		
11.00R20 18PR	152/149 K		152/149 K			152/149 J	152/149 K	152/149 K	152/149 K		152/149 K	152/149 J				152/149 K	152/149 C		152/149 C
12.00R20 18PR	154/151 K		154/151 K			154/151 K	154/151 K	154/151 K	154/151 K		154/151 K	154/151 K			154/151 C	154/151 K	154/151 C		154/151 C
12.00R24 20PR	160/157 K			160/157 K						160/157 K	160/157 K								
11R22.5 16PR	148/145 M			148/145 K	146/143 K								148/145 G						
11R22.5 16PR													146/143 J						
12R22.5 18PR	152/149 M		152/149 L	152/149 K		152/149 M		152/149 M											
13R22.5 20PR	156/152 L(154/151 M)					156/152 L(154/151 M)													
11R24.5 16PR	149/146 L				149/146 K														
295/80R22.5 18PR				152/149 K													152/149 C	152/149 C	
315/80R22.5 20PR		156/152 L(154/151 M)		156/152 K		156/152 L(154/151 M)													
385/65R22.5 20PR														160 K(158 L)					

Technical File

Size	PR	Width	A/R	Rim	LOAD INDEX	SPEED RATING	PATTERN	M+S	APPLICATION	STANDARD RIM	MAX LOAD(KG) SINGLE	MAX LOAD(KG) DUAL	MAX PRESSURE(KPA) SINGLE	MAX PRESSURE(KPA) DUAL	TREAD DEPTH (mm)	SECTION WIDTH (mm)	OUTER DIAMETER (mm)
6.50R16LT	12	6.5		16	110/105	K	HH301		M	5.50F	1150	1030	770	770	11.0	185	750
7.00R16LT	14	7		16	118/114	K	HH168		O	5.50F	1320	1180	770	770	15.5	200	775
7.00R16LT	14	7		16	118/114	M	HH301		M	5.50F	1320	1180	770	770	12.0	200	775
7.00R16LT	14	7		16	118/114	K	HH303		M	5.50F	1320	1180	770	770	14.0	200	775
7.00R16LT	14	7		16	118/114	M	HH306		M	5.50F	1320	1180	770	770	14.0	200	775
7.50R16LT	14	7.5		16	122/118	K	HH168		O	6.00G	1500	1320	770	770	16.5	215	805
7.50R16LT	14	7.5		16	122/118	M	HH301+		M	6.00G	1500	1320	770	770	13	215	805
7.50R16LT	14	7.5		16	122/118	J	HH303		M	6.00G	1500	1320	770	770	15	215	805
7.50R16LT	14	7.5		16	122/118	M	HH306		M	6.00G	1500	1320	770	770	14	215	805
7.50R16LT	14	7.5		16	122/118	M	HH313		M	6.00G	1500	1320	770	770	15	215	805
8.25R15TR	14	8.25		15	129/127	L	HAL535	M+S	L&R	6.5	1850	1750	830	830	11.5	236	847
8.25R16LT	16	8.25		16	128/124	M	HH121		L&R	6.50H	1800	1600	770	770	13.5	235	855
8.25R16LT	16	8.25		16	128/124	K	HH168		O	6.50H	1800	1600	770	770	18	235	855
8.25R16LT	16	8.25		16	128/124	M	HH301		M	6.50H	1800	1600	770	770	16	235	855
8.25R16LT	16	8.25		16	128/124	J	HH303		M	6.50H	1800	1600	770	770	16	235	855
8.25R16LT	16	8.25		16	128/124	M	HH306		M	6.50H	1800	1600	770	770	15	235	855
8.25R16LT	16	8.25		16	128/124	M	HH313		M	6.50H	1800	1600	770	770	16	235	855
8.25R20	16	8.25		20	139/137	C	HH168		O	6.5	2430	2300	930	930	21	236	974
8.25R20	16	8.25		20	139/137	L	HH301		M	6.5	2430	2300	930	930	13.5	236	974
8.25R20	16	8.25		20	139/137	K	HH303		M	6.5	2430	2300	930	930	16	236	974
8.25R20	16	8.25		20	139/137	L	HH306		M	6.5	2430	2300	930	930	14.5	236	974
8.25R20	16	8.25		20	139/137	K	HH313		M	6.5	2430	2300	930	930	16	236	974
8.25R20	16	8.25		20	139/137	C	HH318		O	6.5	2430	2300	930	930	16	236	974
9.00R20	16	9		20	144/142	K	HH104		L&R	7.0	2800	2650	900	900	15	259	1019
9.00R20	16	9		20	144/142	K	HH105		L&R	7.0	2800	2650	900	900	15	259	1019
9.00R20	16	9		20	144/142	C	HH168		O	7.0	2800	2650	900	900	21.5	259	1019
9.00R20	16	9		20	144/142	K	HH301		M	7.0	2800	2650	900	900	15.5	259	1019
9.00R20	16	9		20	144/142	J	HH303		M	7.0	2800	2650	900	900	17	259	1019
9.00R20	16	9		20	144/142	K	HH306		M	7.0	2800	2650	900	900	16	259	1019
9.00R20	16	9		20	144/142	J	HH311		M	7.0	2800	2650	900	900	16.5	259	1019
9.00R20	16	9		20	144/142	K	HH313		M	7.0	2800	2650	900	900	17	259	1019
9.00R20	16	9		20	144/142	C	HH318		M	7.0	2800	2650	900	900	17	258	1018
10.00R15TR	14	10		15	137/135	L	HAL535	M+S	L&R	7.5	2300	2180	720	720	11.5	278	927
10.00R20	18	10		20	149/146	K	HH104		L&R	7.5	3250	3000	930	930	15	278	1054
10.00R20	18	10		20	149/146	K	HH105		L&R	7.5	3250	3000	930	930	16.5	278	1054
10.00R20	18	10		20	149/146	C	HH168		O	7.5	3250	3000	930	930	22	278	1054
10.00R20	18	10		20	149/146	K	HH301		M	7.5	3250	3000	930	930	16.5	278	1054
10.00R20	18	10		20	149/146	K	HH302		M	7.5	3250	3000	930	930	18	278	1054
10.00R20	18	10		20	149/146	K	HH303		M	7.5	3250	3000	930	930	18	278	1054
10.00R20	18	10		20	149/146	K	HH306		M	7.5	3250	3000	930	930	17	278	1054
10.00R20	18	10		20	149/146	K	HH307		M	7.5	3250	3000	930	930	17	278	1054
10.00R20	18	10		20	149/146	K	HH308A		L&R	7.5	3250	3000	930	930	22	278	1054
10.00R20	18	10		20	149/146	K	HH311		M	7.5	3250	3000	930	930	17	278	1054
10.00R20	18	10		20	149/146	K	HH313		M	7.5	3250	3000	930	930	18	278	1054
10.00R20	18	10		20	149/146	K	HH317		O	7.5	3250	3000	930	930	20.5	278	1065
10.00R20	18	10		20	149/146	C	HH318		O	7.5	3250	3000	930	930	18	278	1054
10.00R20	18	10		20	149/146	K	HH329		M	7.5	3250	3000	930	930	20.5	278	1054
10.00R20	18	10		20	149/146	K	HH368		L&R	7.5	3250	3000	930	930	21	278	1054
10.00R20	18	10		20	149/146	K	HH505		L	7.5	3250	3000	930	930	20.5	278	1054
11.00R20	18	11		20	152/149	K	HH104		L&R	8.0	3550	3250	930	930	17	293	1085
11.00R20	18	11		20	152/149	K	HH105		L&R	8.0	3550	3250	930	930	17	293	1085
11.00R20	18	11		20	152/149	K	HH121		L&R	8.0	3550	3250	930	930	15.5	293	1085
11.00R20	18	11		20	152/149	K	HH123		L&R	8.0	3550	3250	930	930	16.5	293	1085
11.00R20	18	11		20	152/149	K	HH301		M	8.0	3550	3250	930	930	17	293	1085
11.00R20	18	11		20	152/149	J	HH302		M	8.0	3550	3250	930	930	18	293	1085
11.00R20	18	11		20	152/149	J	HH303		M	8.0	3550	3250	930	930	19	293	1085
11.00R20	18	11		20	152/149	K	HH306		M	8.0	3550	3250	930	930	17.5	293	1085
11.00R20	18	11		20	152/149	K	HH307		M	8.0	3550	3250	930	930	17.5	293	1085
11.00R20	18	11		20	152/149	K	HH311		M	8.0	3550	3250	930	930	18	293	1085
11.00R20	18	11		20	152/149	K	HH313		M	8.0	3550	3250	930	930	19	293	1085
11.00R20	18	11		20	152/149	K	HH317		O	8.0	3550	3250	930	930	21	293	1085
11.00R20	18	11		20	152/149	C	HH318		O	8.0	3550	3250	930	930	24	293	1085
11.00R20	18	11		20	152/149	C	HH321		O	8.0	3550	3250	930	930	24	293	1085



Technical File

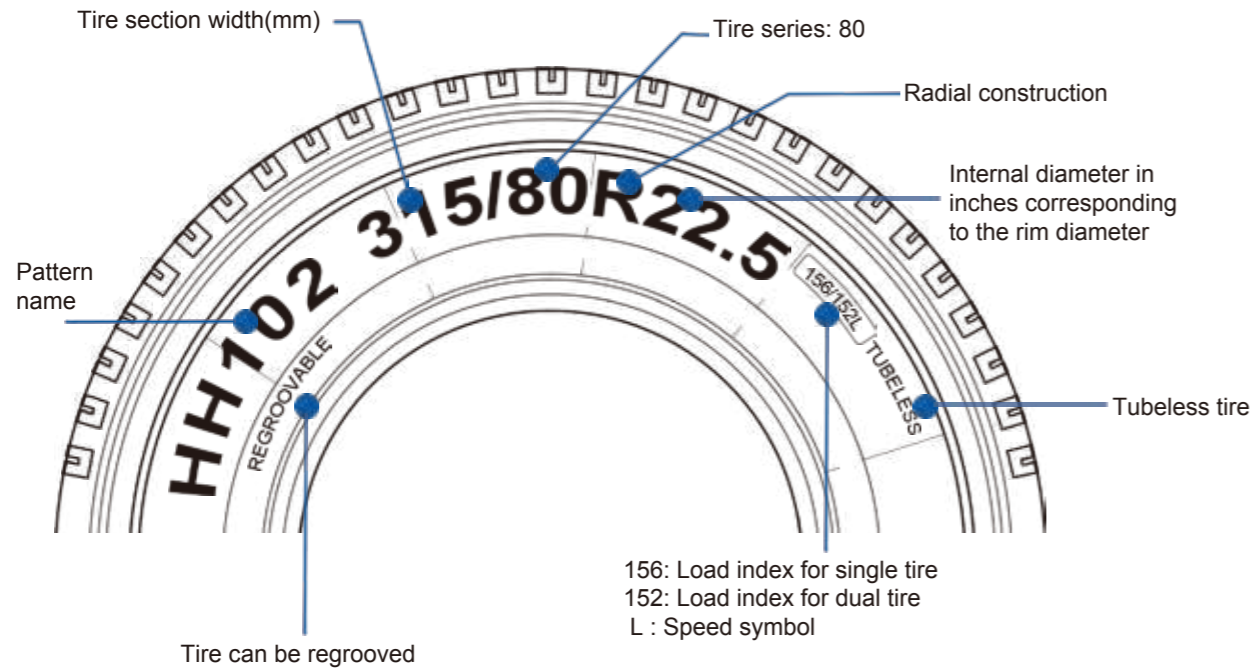
Size	PR	Width	A/R	Rim	LOAD INDEX	SPEED RATING	PATTERN	M+S	APPLICATION	STANDARD RIM	MAX LOAD(KG) SINGLE	MAX LOAD(KG) DUAL	MAX PRESSURE(KPA) SINGLE	MAX PRESSURE(KPA) DUAL	TREAD DEPTH (mm)	SECTION WIDTH (mm)	OUTER DIAMETER (mm)
11.00R20	18	11		20	152/149	K	HH329		M	8.0	3550	3250	930	930	18	293	1085
11.00R20	18	11		20	152/149	J	HH599+		L&R	8.0	3550	3250	930	930	17.5	293	1085
12.00R20	18	12		20	154/151	K	HH104		L&R	8.5	3750	3450	830	830	17.5	315	1125
12.00R20	18	12		20	154/151	K	HH105		L&R	8.5	3750	3450	830	830	17.5	315	1125
12.00R20	18	12		20	154/151	C	HH168		O	8.5	3750	3450	830	830	24	315	1136
12.00R20	18	12		20	154/151	K	HH301		M	8.5	3750	3450	830	830	17.5	315	1125
12.00R20	18	12		20	154/151	K	HH302		M	8.5	3750	3450	830	830	20	315	1125
12.00R20	18	12		20	154/151	K	HH303		M	8.5	3750	3450	830	830	20	315	1125
12.00R20	18	12		20	154/151	K	HH306		M	8.5	3750	3450	830	830	18.5	315	1125
12.00R20	18	12		20	154/151	K	HH307		M	8.5	3750	3450	830	830	18	315	1125
12.00R20	18	12		20	154/151	K	HH311		M	8.5	3750	3450	830	830	19	315	1125
12.00R20	18	12		20	154/151	K	HH313		M	8.5	3750	3450	830	830	20	315	1125
12.00R20	18	12		20	154/151	K	HH317		O	8.5	3750	3450	830	830	21.5	315	1125
12.00R20	18	12		20	154/151	C	HH318		O	8.5	3750	3450	830	830	25	315	1136
12.00R20	18	12		20	154/151	C	HH321		O	8.5	3750	3450	830	830	25	315	1136
12.00R20	18	12		20	154/151	K	HH329		M	8.5	3750	3450	830	830	18.5	315	1125
12.00R24	20	12		24	160/157	K	HH122		L&R	8.5	4500	4125	900	900	15.5	315	1125
12.00R24	20	12		24	160/157	K	HH301		M	8.5	4500	4125	900	900			

Technical File

Size	PR	Width	A/R	Rim	LOAD INDEX	SPEED RATING	PATTERN	M+S	APPLICATION	STANDARD RIM	MAX LOAD(KG) SINGLE	MAX LOAD(KG) DUAL	MAX PRESSURE(KPA) SINGLE	MAX PRESSURE(KPA) DUAL	TREAD DEPTH (mm)	SECTION WIDTH (mm)	OUTER DIAMETER (mm)
13R22.5	20	13		22.5	156/152(154/151)	L(M)	HH301	M+S	M	9.75	4000	3550	860	860	16.5	320	1124
13R22.5	20	13		22.5	156/152(154/151)	L(M)	HH302	M+S	M	9.75	4000	3550	860	860	20	320	1124
13R22.5	20	13		22.5	156/152(154/151)	L(M)	HH309	M+S	L&R	9.75	4000	3550	860	860	18	320	1124
11R24.5	14	11		24.5	146/143	M	HH111		L&R	8.25	3000	2725	720	720	15	279	1104
11R24.5	14	11		24.5	146/143	M	HH312		L&R	8.25	3000	2725	720	720	21.5	279	1104
11R24.5	14	11		24.5	146/143	L	HDL230	M+S	L&R	8.25	3000	2725	720	720	21.5	279	1116
11R24.5	14	11		24.5	146/143	M	HAR532	M+S	L&R	8.25	3000	2725	720	720	15	279	1104
11R24.5	14	11		24.5	146/143	M	HTL331	M+S	L&R	8.25	3000	2725	720	720	11	279	1104
11R24.5	14	11		24.5	146/143	M	HSL129	M+S	L&R	8.25	3000	2725	720	720	15	279	1104
11R24.5	16	11		24.5	149/146	L	HH111		L&R	8.25	3250	3000	830	830	15	279	1104
11R24.5	16	11		24.5	149/146	L	HH301	M+S	M	8.25	3250	3000	830	830	15.5	279	1104
11R24.5	16	11		24.5	149/146	L	HH312		L&R	8.25	3250	3000	830	830	21.5	279	1104
11R24.5	16	11		24.5	149/146	L	HDL230	M+S	L&R	8.25	3250	3000	830	830	21.5	279	1116
11R24.5	16	11		24.5	149/146	L	HAR532	M+S	L&R	8.25	3250	3000	830	830	15	279	1104
11R24.5	16	11		24.5	149/146	L	HDR233	M+S	L&R	8.25	3250	3000	830	830	21.5	279	1116
11R24.5	16	11		24.5	149/146	K	HAM537	M+S	M	8.25	3250	3000	830	830	17.5	279	1104
215/75R17.5	16	215	75	17.5	135/133	J	HH102	M+S	L&R	6.00	2180	2060	850	850	12	212	767
215/75R17.5	16	215	75	17.5	135/133	L	HH111	M+S	L&R	6.00	2180	2060	850	850	13	212	767
215/75R17.5	16	215	75	17.5	135/133	J	HH309	M+S	L&R	6.00	2180	2060	850	850	14	212	767
215/75R17.5	16	215	75	17.5	135/133	J	HAL535	M+S	L&R	6.00	2180	2060	850	850	11.5	212	767
225/75R17.5	14	225	75	17.5	129/127	M	HAR518	M+S	L&R	6.75	1850	1750	725	725	13	226	783
235/75R17.5	16	235	75	17.5	143/141	J	HH107	M+S	L&R	6.75	2725	2575	875	875	13	233	797
235/75R17.5	16	235	75	17.5	143/141	L	HH111	M+S	L&R	6.75	2725	2575	875	875	13	233	797
235/75R17.5	16	235	75	17.5	143/141	J	HH309	M+S	L&R	6.75	2725	2575	875	875	15	233	797
235/75R17.5	16	235	75	17.5	143/141	J	HAL535	M+S	L&R	6.75	2725	2575	875	875	11.5	233	797
245/70R17.5	16	245	70	17.5	136/134	M	HAR518		L&R	7.50	2240	2120	850	850	13	248	789
245/70R17.5	18	245	70	17.5	143/141(146/146)	J(F)	HAR518		L&R	7.50	2725	2575	875	875	13	248	789
435/50R19.5	20	435	50	19.5	160	J	HTL357		L&R	14.00	4500	-	900	-	13.5	438	931
225/70R19.5	14	225	70	19.5	128/126	L	HH111		L&R	6.75	1800	1700	760	760	13	226	811
225/70R19.5	14	225	70	19.5	128/126	M	HAL535	M+S	L&R	6.75	1800	1700	760	760	11.5	226	811
245/70R19.5	14	245	70	19.5	133/131	M	HAL535	M+S	L&R	7.50	2060	1950	760	760	11.5	248	839
245/70R19.5	16	245	70	19.5	135/133	L	HH111		L&R	7.50	2180	2060	830	830	13	248	839
245/70R19.5	16	245	70	19.5	136/134	M	HAR518	M+S	L&R	7.50	2240	2120	825	825	14	248	839
245/70R19.5	18	245	70	19.5	141/140	J	HAR518	M+S	L&R	7.50	2575	2500	850	850	14	248	839
265/70R19.5	16	265	70	19.5	140/138	M	HAR518	M+S	L&R	7.50	2500	2360	775	775	14	262	867
265/70R19.5	18	265	70	19.5	143/141	J	HDR255	M+S	L&R	7.50	2725	2575	850	850	16	262	867
265/70R19.5	18	265	70	19.5	143/141	J	HAR518	M+S	L&R	7.50	2725	2575	850	850	14	262	867
285/70R19.5	16	285	70	19.5	146/144(144/142)	L(M)	HAR518	M+S	L&R	8.25	3000	2800	850	850	14	283	895
285/70R19.5	18	285	70	19.5	150/148	J	HAR518	M+S	L&R	8.25	3350	3150	900	900	14	283	895
255/70R22.5	16	255	70	22.5	140/137	L	HH102		L&R	7.50	2500	2300	830	830	14	255	930
255/70R22.5	16	255	70	22.5	140/137	L	HH111		L&R	7.50	2500	2300	830	830	13	255	930
255/70R22.5	16	255	70	22.5	140/137	L	HAL535	M+S	L&R	7.50	2500	2300	830	830	13.5	255	930
275/70R22.5	16	275	70	22.5	148/145	M	HAR515	M+S	L&R	8.25	3150	2900	900	900	15.5	276	958
275/70R22.5	16	275	70	22.5	148/145	J	HAU512	M+S	L&R	8.25	3150	2900	900	900	19.3	276	958
275/70R22.5	18	275	70	22.5	152/148	J	HAL535	M+S	L&R	8.25	3550	3150	930	930	13.5	276	958
295/75R22.5	14	295	75	22.5	144/141	M	HH111		L&R	9.00	2800	2575	760	760	15.5	298	1014
295/75R22.5	14	295	75	22.5	144/141	M	HH312		L&R	9.00	2800	2575	760	760	22	298	1026
295/75R22.5	14	295	75	22.5	144/141	M	HH118	M+S	L&R	9.00	2800	2575	760	760	11	298	1014
295/75R22.5	14	295	75	22.5	144/141	M	HDL230	M+S	L&R	9.00	2800	2575	760	760	21.5	298	1026
295/75R22.5	14	295	75	22.5	144/141	M	HAR532	M+S	L&R	9.00	2800	2575	760	760	15	298	1014
295/75R22.5	14	295	75	22.5	144/141	M	HTL331	M+S	L&R	9.00	2800	2575	760	760	11	298	1014

Technical File

Size	PR	Width	A/R	Rim	LOAD INDEX	SPEED RATING	PATTERN	M+S	APPLICATION	STANDARD RIM	MAX LOAD(KG) SINGLE	MAX LOAD(KG) DUAL	MAX PRESSURE(KPA) SINGLE	MAX PRESSURE(KPA) DUAL	TREAD DEPTH (mm)	SECTION WIDTH (mm)	OUTER DIAMETER (mm)
295/75R22.5	14	295	75	22.5	144/141	M	HSL129	M+S	L&R	9.00	2800	2575	760	760	15	298	1014
295/75R22.5	16	295	75	22.5	146/143	L	HH111		L&R	9.00	3000	2725	830	830	15.5	298	1014
295/75R22.5	16	295	75	22.5	146/143	L	HH312		L&R	9.00	3000	2725	830	830	22	298	1026
295/75R22.5	16	295	75	22.5	146/143	L	HH118	M+S	L&R	9.00	3000	2725	830	830	11	298	1014
295/75R22.5	16	295	75	22.5	146/143	L	HDL230	M+S	L&R	9.00	3000	2725	830	830	21.5	298	1026
295/75R22.5	16	295	75	22.5	146/143	L	HAR532	M+S	L&R	9.00	3000	2725	830	830	15	298	1014
295/80R22.5	18	295	80	22.5	152/149	C	HH320	M+S	O	9.00	3550	3250	900	900	21.5	298	1044
295/80R22.5	18	295	80	22.5	152/149	M	HH121	M+S	L&R	9.00	3550	3250	900	900	16.5	298	1044
295/80R22.5	18	295	80	22.5	152/149	M	HH102	M+S	L&R	9.00	3550	3250	900	900	15	298	1044
295/80R22.5	18	295	80	22.5	152/149	M	HH106	M+S	L&R	9.00	3550	3250	900	900	15	298	1044
295/80R22.5	18	295	80	22.5	152/149	M	HH309	M+S	L&R	9.00	3550	3250	900	900	20.5	298	1044
295/80R22.5	18	295	80	22.5	152/149	C	HH318	M+S	O	9.00	3550	3250	900	900	21.5	298	1044
295/80R22.5	18	295	80	22.5	152/149	M	HH368	M+S	L&R	9.00	3550	3250	900	900	18	298	1044
295/80R22.5	18	295	80	22.5	152/149	M	HAR515	M+S	L&R	9.00	3550	3250	900	900	16	298	1044
295/80R22.5	18	295	80	22.5	152/149	K	HAM517	M+S	M	9.00	3550	3250	900	900	16	298	1044
315/70R22.5	20	315	70	22.5	154/150(152/148)	L(M)	HH102	M+S	L&R	9.00	3750	3350	900	900	15	312	1014
315/70R22.5	20	315	70	22.5	154/150(152/148)	L(M)	HH121	M+S	L&R	9.00	3750	3350	900	900	15.5	312	1014
315/70R22.5	20	315	70	22.5	154/150(152/148)	L(M)	HH308A	M+S	L&R	9.00	3750	3350	900	900	20	312	1014
315/70R22.5	20	315	70	22.5	154/150(152/148)	L(M)	HH309	M+S	L&R	9.00	3750	3350	900	900	21	312	1014
315/80R22.5	20	315	80	22.5	156/152(154/151)	L(M)	HH102	M+S	L&R	9.00	4000	3550	860	860	14.5	312	1076
315/80R22.5	20	315	80	22.5	156/152(154/151)	L(M)	HH104	M+S	L&R	9.00	4000	3550	860	860	14.5	312	1076
315/80R22.5	20	315	80	22.5	156/152(154/151)	L(M)	HH121	M+S	L&R	9.00	4000	3550	860	860	15.5	312	1076
315/80R22.5	20	315	80	22.5	156/152(154/151)	L(M)	HH122	M+S	L&R	9.00	4000	3550	860	860	16.5	312	1076
315/80R22.5	20	315	8														



Refer to the Speed Symbols and Load Capacity Index tables below



Before fitting, it is essential to check the different markings to ensure that the tires meet the maximum load and speed possibilities and/or the regulations in force

Speed Symbols

SI	km/h
B	50
C	60
D	65
E	70
F	80
G	90
J	100
K	110
L	120
M	130
N	140
P	150
Q	160
R	170

Load Capacity Index

LI	KG	LI	KG	LI	KG
115	1215	136	2240	157	4125
116	1250	137	2300	158	4250
117	1285	138	2360	159	4375
118	1320	139	2430	160	4500
119	1360	140	2500	161	4625
120	1400	141	2575	162	4750
121	1450	142	2650	163	4875
122	1500	143	2725	164	5000
123	1550	144	2800	165	5150
124	1600	145	2900	166	5300
125	1650	146	3000	167	5450
126	1700	147	3075	168	5600
127	1750	148	3150	169	5800
128	1800	149	3250	170	6000
129	1850	150	3350	171	6150
130	1900	151	3450	172	6300
131	1950	152	3550	173	6500
132	2000	153	3650	174	6700
133	2060	154	3750	175	6900
134	2120	155	3875	176	7100
135	2180	156	4000	177	7300

Important instructions for safe inflation

Over-inflation reduces:

- Comfort
- Grip
- Braking distance
- Tire life span, particularly on drive axle tires
- Safety

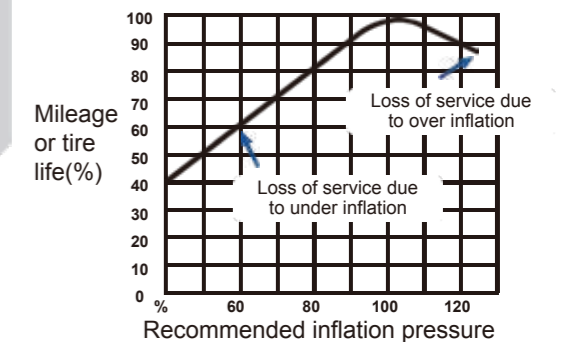
Under-inflation leads to:

- Reduced vehicle handling and safety
- A reduction in casing retreadability
- An increase of rolling resistance consequently of fuel consumption

Over-inflation

Under-inflation

Effect of inflation pressure on tire life



ADVICE BEFORE INFLATION

- 1 Weigh your vehicle and its load, axle by axle, to determine tire pressure
- 2 Measure the pressure when cold (when the vehicle has been stationary for several hours): pressures must be checked at regular intervals and during each service
- 3 Important safety instruction: pressure increases when the vehicle is in motion, never reduce the pressure of a hot tire
- 4 Pressure gauges: must be accurate, handled with care and calibrated regularly



Caution: Driving with insufficient pressure can damage your tires. Have your tires fully checked over by an expert