

**HIFLY**  
**TIRES**

Shandong Hengfeng Rubber & Plastic Co., Ltd.  
Dawang Economic Development Zone, Dongying, Shandong, China  
Tel: +86 546 6893270 Fax: +86 546 6893669  
<http://www.hengfengtires.com>

**HIFLY**  
**TIRES**

Performance · Value





**Shandong Hengfeng Rubber & Plastic Co., Ltd.**

### **Company Profile:**

*HIFLY Tires*, enjoying high popularity in the domestic and international market, is one of the major brands developed by *Shandong Hengfeng Rubber & Plastic Co., Ltd.* .

*Shandong Hengfeng Rubber & Plastic Co., Ltd.*, one of the leading tire manufacturers in China, was established in 1995 and covers an area of about 1.6 square kilometers, with the total assets of over RMB 5 billion and more than 6000 employees. The company owns four plants in Dongying city, Shandong province, China, one TBR factory with annual production capacity of 4 million tires, one PCR factory with annual production capacity of 12 million tires, one tire manufacturing equipment factory and one power plant.

*Hengfeng* specializes in manufacturing radial tires widely used in passenger car, SUV, truck and bus and in all seasons with excellent performance, which are well-reputed all over the world.

*Hengfeng* takes pride in its smart R&D team and advanced testing facilities, which assure the excellent and stable quality of its products. Many of *Hengfeng*'s manufacturing equipments are imported from Europe, United States and Japan.

*Hengfeng* has built a strong quality assurance system and its products are accredited with certificates of ISO9001, TS16949, DOT, ECE, GCC, INMETRO, CCC, BIS, SNI, SONCAP, etc. .



**We export to more than 80 countries in the world**



**Qualifications:**



**TS16949**



**ISO9001**



**DOT**



**ECE**



**INMETRO**



**GCC**



**BIS**



**SNI**



**SONCAP**

**TABLE OF CONTENTS**

<b>PCR</b>		
	HF805 .....	P1
	HF201 .....	P3
<b>SUV</b>		
	VIGOROUS AT601 .....	P5
	VIGOROUS MT601 .....	P6
	VIGOROUS HT601 .....	P7
<b>LIGHT TRUCK</b>		
	SUPER2000 .....	P8
<b>WINTER</b>		
	Win-turi 211 .....	P9
	Win-turi 212 .....	P10
	Win-transit .....	P11

ULTRA HIGH PERFORMANCE &  
ASYMMETRICAL PATTERN DESIGN



## HF805

Series	Size	Load Index	Speed Rating	UTQG
35	245/35R19	93 XL	W	280AAA
	255/35R20	97 XL	W	280AAA
40	205/40R17	84 XL	W	280AAA
	215/40R17	87 XL	W	280AAA
	225/40R18	92 XL	W	280AAA
	235/40R18	95 XL	W	280AAA
45	245/40R18	97 XL	W	280AAA
	195/45R16	84 XL	V	280AAA
	205/45R16	87 XL	W	280AAA
	205/45R17	88 XL	W	280AAA
	215/45R17	91 XL	W	280AAA
50	225/45R17	94 XL	W	280AAA
	235/45R17	97 XL	W	280AAA
	245/45R18	100 XL	W	280AAA
	195/50R15	86 XL	V	400AA
55	205/50R16	91 XL	W	280AAA
	225/50R16	92	V	280AAA
	205/50R17	93 XL	W	280AAA
55	195/55R16	91 XL	V	280AAA
	205/55R16	94 XL	W	280AAA
	215/55R16	97 XL	V	280AAA
	215/55R16	97 XL	W	280AAA
	215/55R17	98 XL	W	280AAA



15-20 Inch      Speed Rating: V-W  
35-55 Series      UTQG: 280AAA-400AA

### Features

Four wide circumferential grooves, lateral grooves with fine sipes and continuous block patterns on shoulder

Variable pitch tread design

Jointless Nylon Band

Silica tread compound

Rim protector

### Benefits

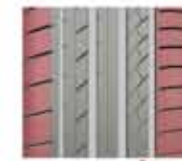
Provide efficient water evacuation, outstanding wet performance and enhanced stability at high speed cornering

Superior comfort and quiet ride

Improve tread stiffness and uniformity and deliver high speed stability

Provide better performance on wet surface and reduce rolling resistance

Protect wheels from curb damage



### Stability

Continuous block patterns on shoulder reduce pattern deformation during driving with prompt response and enhanced stability at high speed cornering



### Water Evacuation

Four wide circumferential grooves deliver efficient water evacuation and prevent aquaplaning



Lateral grooves with fine sipes provide outstanding wet performance



Jointless Cap-Ply

Jointless bead wire and high density nylon improve high speed stability & maximize steering response

**Improve** HIGH SPEED STABILITY

Multi-inner radius improves driving control while assuring performance at high speed

**Improve** CONTROL



Special rim protector protects wheels from curb damage

# HIFLY TIRES

PROVIDE A QUIET  
COMFORTABLE  
AND SAFE RIDE

## HF201



12-16 Inch Speed Rating: T-V  
50-80 Series UTQG: 400AA

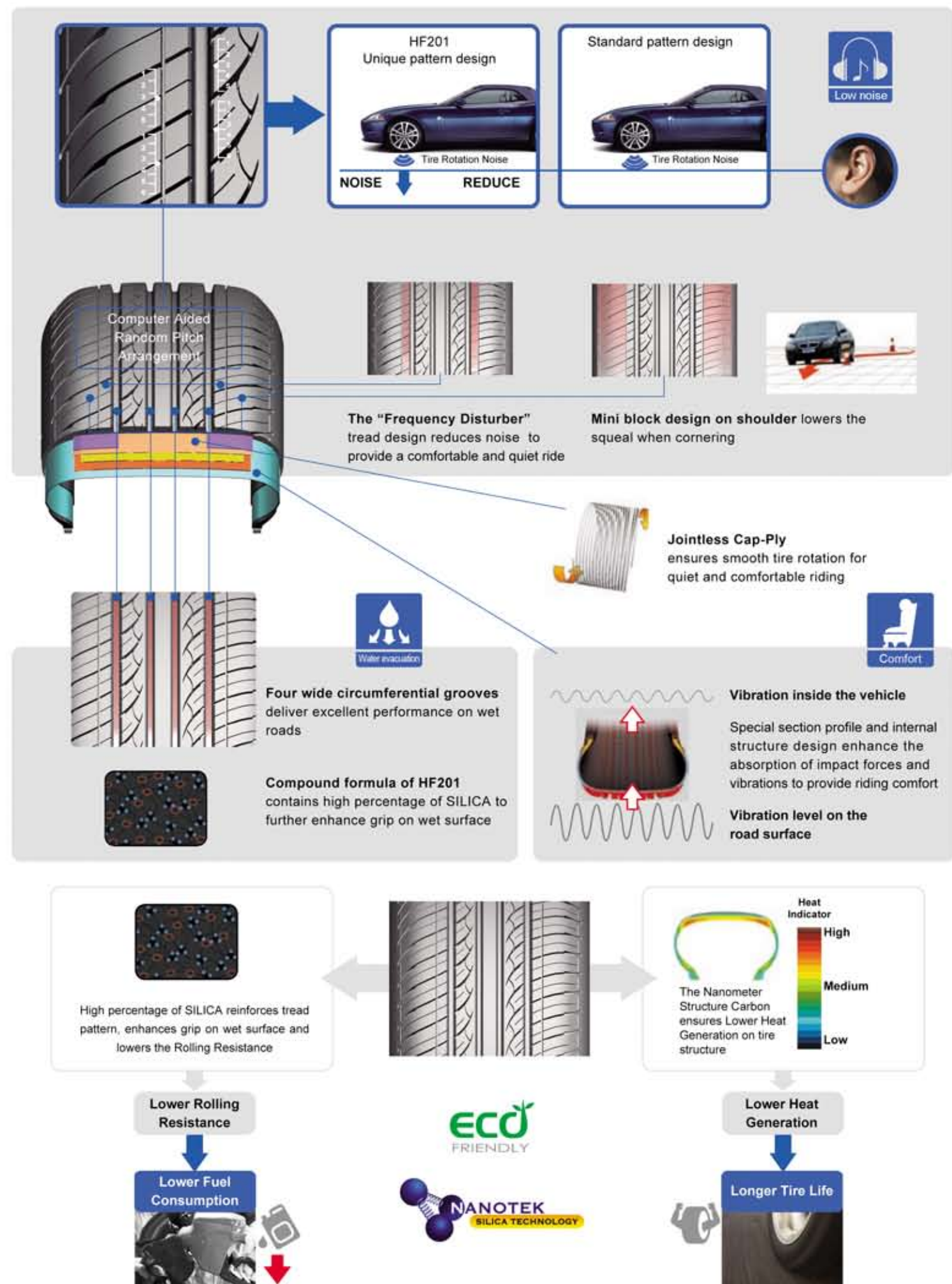
### Features

- Special tread compound
- Four wide circumferential tread grooves
- Continuous solid center ribs
- Improved groove and bead profile design
- Optimized variable pitch tread design

### Benefits

- ▶ Excellent grip on wet and dry roads
- ▶ Deliver excellent performance on wet roads
- ▶ Improve directional stability, provide more comfortable experience and prevent irregular wear
- ▶ Better ride stability and handling performance
- ▶ Superior comfort and quiet ride

Series	Size	Load Index	Speed Rating	UTQG	Series	Size	Load Index	Speed Rating	UTQG	Series	Size	Load Index	Speed Rating	UTQG
50	195/50R15	82	V	400AA	60	215/60R16	99 XL	H	400AA	65	215/65R16	98	H	400AA
	205/50R16	87	V	400AA		215/60R16	95	V	400AA		215/65R16	102 XL	H	400AA
55	165/55R14	72	H	400AA		225/60R16	98	H	400AA		155/70R12	73	T	400AA
	185/55R14	80	H	400AA		225/60R16	102 XL	V	400AA		165/70R12	77	T	400AA
	185/55R15	82	V	400AA	165/65R13	77	T	400AA	155/70R13	75	T	400AA		
60	195/55R15	85	V	400AA	155/65R14	75	T	400AA	165/70R13	79	T	400AA		
	205/55R16	91	V	400AA	165/65R14	79	T	400AA	175/70R13	82	T	400AA		
	165/60R13	73	T	400AA	175/65R14	82	T	400AA	185/70R13	86	H	400AA		
	175/60R13	77	H	400AA	175/65R14	82	H	400AA	165/70R14	81	T	400AA		
	165/60R14	75	H	400AA	185/65R14	86	H	400AA	175/70R14	84	T	400AA		
	185/60R14	82	H	400AA	175/65R15	84	H	400AA	185/70R14	88	H	400AA		
60	195/60R14	86	H	400AA	185/65R15	88	H	400AA	195/70R14	91	H	400AA		
	185/60R15	84	H	400AA	195/65R15	95 XL	H	400AA	205/70R14	95	H	400AA		
	185/60R15	88 XL	H	400AA	195/65R15	91	V	400AA	205/70R15	96	H	400AA		
	195/60R15	88	V	400AA	205/65R15	94	H	400AA	215/70R15	98	H	400AA		
	205/60R15	91	V	400AA	205/65R15	94	V	400AA	155/80R13	79	T	400AA		
	205/60R16	92	V	400AA	215/65R15	96	H	400AA	185/80R15	93	T	400AA		



# HIFLY TIRES



ALL-TERRAIN 4 X 4 SUV TIRE  
OUTSTANDING ON AND OFF-ROAD PERFORMANCE

## VIGOROUS AT601



Series	Size	Ply Rating	Load Index	Speed Rating
SUV	31×10.50R15LT	6PR	109	R
	LT265/70R17	10PR	121/118	S
	LT235/75R15	6PR	104/101	R
	LT225/75R16	10PR	115/112	S
	LT245/75R16	10PR	120/116	S
	LT265/75R16	10PR	123/120	R
	LT245/75R17	10PR	121/118	S
	LT215/85R16	10PR	115/112	R
	LT235/85R16	10PR	120/116	R



15-17 Inch     Speed Rating: R-S  
 70-85 Series

### Features

- Special tread compound and wide footprint
- Block tread design with multiple-sipes
- Open shoulder grooves
- Jointless Nylon Band
- Strong structure design

### Benefits

- Enhance tread life and deliver excellent braking on wet and dry roads
- Provide outstanding off-road traction
- Prevent aquaplaning with enhanced wet grip performance
- Improve tread stiffness and uniformity and deliver high speed stability
- Provide reliability and durability

# HIFLY TIRES



**OUTSTANDING PERFORMANCE  
IN EXTREME DRIVING CONDITIONS**

## VIGOROUS MT601



Series	Size	Ply Rating	Load Index	Speed Rating
SUV	31X10.5R15LT	6PR	109	Q
	LT235/75R15	6PR	104/101	Q
	LT245/75R16	6PR	120/116	Q

15-16 Inch

Speed Rating: Q

75 Series

### Features

- Aggressive pattern design
- High void ratio and open shoulder design
- Special casing profile and solid shoulder pattern
- Reinforced casing construction

### Benefits

- ▶ Outstanding traction in all conditions
- ▶ Excellent resistance to aquaplaning and self-cleaning performance
- ▶ Enhanced traction and cornering performance
- ▶ Superior overall resistance to damage

# HIFLY TIRES

DELIVER GRIP AND LONG TREAD WEAR  
FOR ALL-SEASON HIGHWAY DRIVING

## VIGOROUS HT601



Series	Size	Load Index	Speed Rating
SUV	235/60R16	100	H
	215/65R16	98	H
	235/70R16	106	H
	245/70R16	111	H
	235/75R15	108	H

15-16 Inch      Speed Rating: H

60-75 Series

### Features

Four circumferential grooves and open shoulder slots

High-density sipes with silica compound

Variable pitch pattern and optimized footprint design

Solid center ribs

Jointless Nylon Band

### Benefits

- ▶ Prevent aquaplaning with enhanced wet grip performance
- ▶ Deliver a smooth ride, lower noise and improve traction on dry and wet roads
- ▶ Superior comfort and quiet ride
- ▶ Provide steering stability and deliver a comfortable ride
- ▶ Improve tread stiffness and uniformity and deliver high speed stability



# HIFLY TIRES



**LIGHT TRUCK TIRE WITH  
ENHANCED DURABILITY & MILEAGE**

## SUPER2000

Series	Size	Ply Rating	Load Index	Speed Rating
	155R12C	8PR	88/86	Q
	155R13C	8PR	90/88	Q
	165R13C	8PR	94/92	R
	185R14C	8PR	102/100	R
	195R14C	8PR	106/104	R
	195R15C	8PR	106/104	R
	175/65R14C	6PR	90/88	T
LT	205/65R15C	6PR	102/100	T
	195/65R16C	8PR	104/102	T
	205/65R16C	8PR	107/105	T
	215/65R16C	8PR	109/107	T
	225/65R16C	8PR	112/110	T
	235/65R16C	8PR	115/113	T
	165/70R13C	6PR	88/86	S
	165/70R14C	6PR	89/87	R
	195/70R15C	8PR	104/102	R



Comfort



Heat Resistant



All season



12-16 Inch



Speed Rating: Q-T

Series	Size	Ply Rating	Load Index	Speed Rating
	205/70R15C	8PR	106/104	R
	215/70R15C	8PR	109/107	R
	225/70R15C	8PR	112/110	R
LT	185/75R16C	8PR	104/102	R
	195/75R16C	8PR	107/105	R
	205/75R16C	8PR	110/108	R
	215/75R16C	10PR	116/114	R

### Features

Reinforced structure composed of two steel belts and full nylon protector

Zigzag vertical groove and open horizontal groove arrangement with sipes

Special abrasion-resistant tread compound

Variable pitch pattern

### Benefits

- Deliver extra puncture resistance and robust load bearing capacity
- Provide excellent wet and dry grip
- Provide enhanced mileage with reduced heat
- Superior comfort and quiet ride

# HIFLY TIRES

ASYMMETRICAL  
STUDLESS WINTER TIRE

## Win-turi 211



Series	Size	Load Index	Speed Rating
45	225/45R17	94XL	H
50	195/50R15	86XL	H
	185/55R15	86XL	H
	195/55R15	85	H
55	195/55R16	91XL	H
	205/55R16	91	H
	215/55R16	97XL	H
	185/60R14	82	T
	185/60R15	84	T
60	195/60R15	88	H
	205/60R16	92	H
	215/60R16	99XL	H
	175/65R14	82	T
	185/65R14	86	T
65	185/65R15	88	T
	195/65R15	91	T
	205/65R15	94	H



14-17 Inch      Speed Rating: T-H

45-65 Series

### Features

Silica tread compound

Four longitudinal grooves and deep lateral slots

Asymmetrical pattern design

Optimized tread block and sipe

### Benefits

- ▶ Provide better performance on wet surface and reduce rolling resistance
- ▶ Provide extra grip and stability in deep snow conditions
- ▶ Excellent braking and traction performance
- ▶ Outstanding traction in snow conditions

# HIFLY TIRES



EXCELLENT GRIP AND HANDLING  
IN ALL WINTER CONDITIONS

## Win-turi 212



Series	Size	Load Index	Speed Rating
45	225/45R17	94XL	H
	195/50R15	86XL	H
50	205/50R17	93XL	H
	225/50R17	98XL	H
55	185/55R15	86XL	H
	195/55R15	85	H
	195/55R16	91XL	H
	205/55R16	91	H
	215/55R16	97XL	H
60	225/55R17	101XL	H
	185/60R14	82	T
	185/60R15	84	T
	195/60R15	88	H
	205/60R16	92	H
65	215/60R16	99XL	H
	155/65R14	75	T
	175/65R14	82	T
	185/65R14	86	T
	175/65R15	84	T
	185/65R15	88	T
	195/65R15	91	T
70	205/65R15	94	H
	215/65R16	98	H
	165/70R14	81	T



14-17 Inch     Speed Rating: T-H  
 45-70 Series

### Features

Outer longitudinal rib block design and inner lateral slots

Silica tread compound

Three longitudinal grooves

Non-through block sipes

### Benefits

➤ Enhance braking, cornering grip and the removal of water and slush

➤ Deliver superb traction and lower rolling resistance

➤ Improve water evacuation and stability in deep snow conditions

➤ Provide excellent grip, minimise the friction and reduce rolling resistance

# HIFLY TIRES



WINTER COMMERCIAL VAN TIRE

## Win-transit



Series	Size	Ply Rating	Load Index	Speed Rating
65	195/65R16C	8PR	104/102	R
	205/65R16C	8PR	107/105	R
	215/65R16C	8PR	109/107	R
	235/65R16C	8PR	115/113	R
70	195/70R15C	8PR	104/102	R
	215/70R15C	8PR	109/107	R
	225/70R15C	8PR	112/110	R
75	195/75R16C	8PR	107/105	R



15-16 Inch      Speed Rating: R

65-75 Series

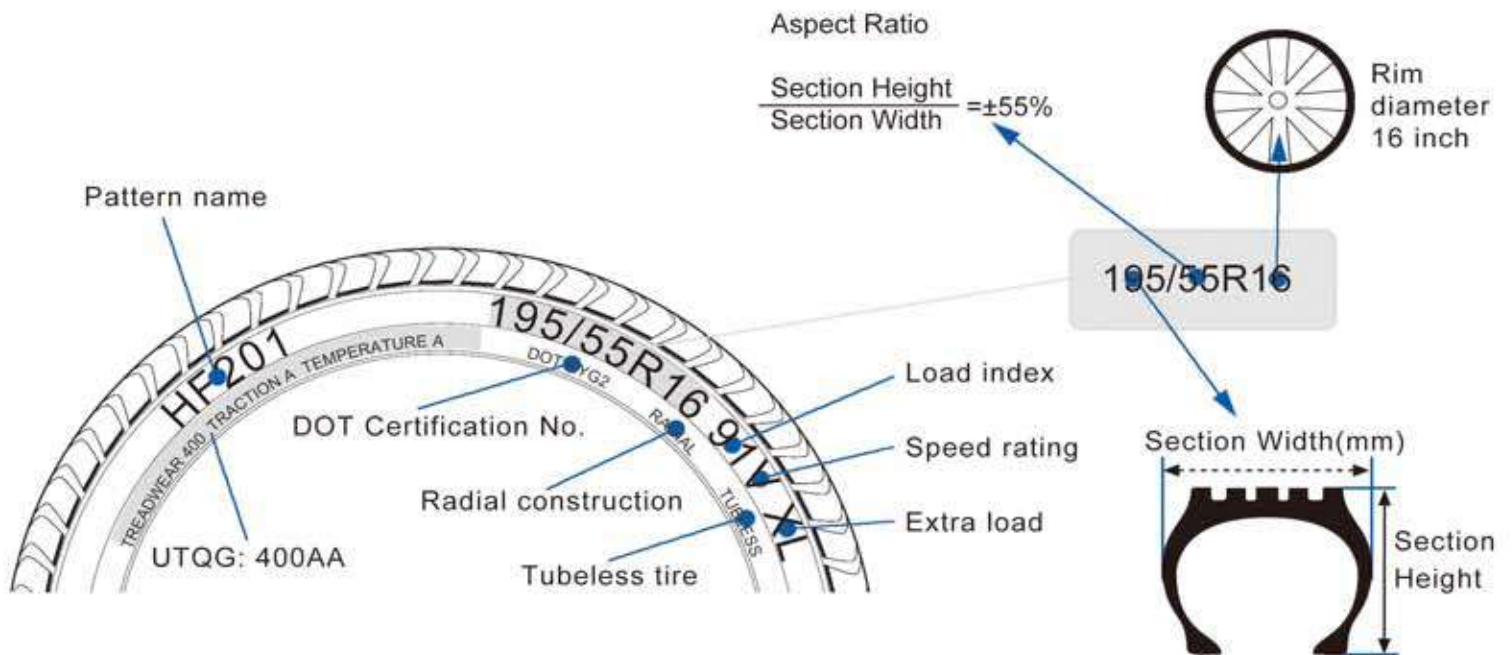
### Features

- Silica tread compound
- Large block tread design
- Zigzag grooves and high-density sipes arrangement
- Reinforced construction

### Benefits

- ▶ Provide better performance on wet surface and reduce rolling resistance
- ▶ Enhance traction and handling in snow conditions
- ▶ Improve grip performance from wet and frigid surfaces to snow and ice
- ▶ Deliver robust load bearing capacity and rugged durability

# Technical File



## Speed Symbols

SI	KM/H
B	50
C	60
D	65
E	70
F	80
G	90
J	100
K	110
L	120
M	130
N	140
P	150
Q	160
R	170
S	180
T	190
U	200
H	210
V	240
W	270
Y	300
Z	Above 240

## Load Capacity Index

LI	KG	LI	KG	LI	KG	LI	KG
50	190	70	335	90	600	110	1060
51	195	71	345	91	615	111	1090
52	200	72	355	92	630	112	1120
53	206	73	365	93	650	113	1150
54	212	74	375	94	670	114	1180
55	218	75	387	95	690	115	1215
56	224	76	400	96	710	116	1250
57	230	77	412	97	730	117	1285
58	236	78	425	98	750	118	1320
59	243	79	437	99	775	119	1360
60	250	80	450	100	800	120	1400
61	257	81	462	101	825	121	1450
62	265	82	475	102	850	122	1500
63	272	83	487	103	875	123	1550
64	280	84	500	104	900	124	1600
65	290	85	515	105	925	125	1650
66	300	86	530	106	950	126	1700
67	307	87	545	107	975	127	1750
68	315	88	560	108	1000	128	1800
69	325	89	580	109	1030	129	1850
						130	1900

